



New

PAL Newsletter February 2016

New Members:

Bhakti Banning
Sandra DeLong
Pam Berry

Renewing Members:

Joan Chlarson
Alice Horst
Jane Hamilton
Roseann Kauffman
Sandra Main
Diane Friedberg
Colleen Bailey

PAL MEMBERSHIP:

Who We Are - Placer Artists League (PAL) promotes professional camaraderie, artistic support and exhibit opportunities in partnership with PlacerArts. PAL is a group of active visual artists who meet regularly for camaraderie, artist presentations and demonstrations on a variety of media and art related topics from award winning professionals.

MEETINGS:

Held the first Tuesday of every month (except July), alternating between 10am and 7pm monthly. Refer to the newsletter regarding the location & time of the meeting.

EXISTING MEMBERS:

If you change your phone number, home address or email address, please contact Carol Grismore at cgrismore@hotmail.com

MEMBERSHIP:

If you are new or renewing your PAL participation, make sure to select your tax deductible PlacerArts membership level as well as the supplementary participation fee - \$20 Placer Artists League. Both boxes need to be selected.

Click here to join or renew your membership [New/Renew PAL Membership](#)

OPAL

OTHER LINKS

[PAL Website](#)
[PAL Newsletter Archives](#)
[PlacerArts Website](#)
[PlacerArts Artist Directory](#)
[PlacerArts Call to Artists](#)
[California Arts Council](#)
[Blue Line Arts](#)
[Sacramento Fine Arts](#)
[General Gomez Art Center](#)
[Art League of Lincoln](#)

Greetings!

We are excited to kick off Spring this month! We look forward to seeing you at our upcoming meeting(s); please feel free to bring guests and attend as a guest if you are not a current member. Please join us at our March 1st meeting at Auburn City Hall, 1225 Lincoln Way, Auburn, Ca, where renowned artist Kit Knight will be presenting. She is an extraordinary Artist, and her generosity towards improving the arts is a gift not to be missed.

I am excited to be your newsletter editor, please send me all pertinent information about your shows, awards, etc. for publication in future newsletters. Please email me directly at smilyone7@gmail.com with your news by the 10th of each month to make it to print.

Sincerely,
Carol Duarte
PAL Newsletter Editor

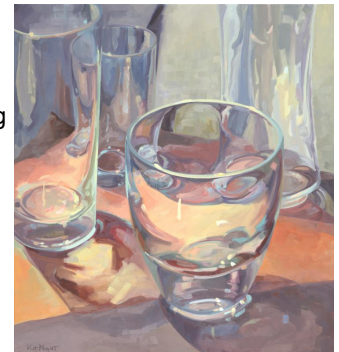
PAL March 1st with Kit Knight, Local Legendary Artist

Join us with Kit Knight our guest speaker, leading a lively, fun, informative critique session for our Placer Arts League (PAL) meeting, March 1, 2016, 10am, Auburn City Hall, 1225 Lincoln Way, Auburn, Ca. Kit Knight is a highly awarded and internationally recognized Fine Art Painter. She is kindly offering her expertise and critiques to our member Artists, so bring your latest original painting to the meeting. Link to her website at www.KitNight.com and join "Art in the Morning", Kit's direct newsletter and attempt to make the world a kinder place through art. She has turned five years of weekly paintings accompanied by her musings on nature, painting, life, and jazz into a book.

Now you can see what you've been missing in her book available on Amazon.com.

Night's work has received praise from art critic, essayist and Pulitzer Prize winner John Updike, jazz composer, pianist and creator of NPR's "Piano Jazz", Marian McPartland and best-selling author of "Art & Physics", Leonard Shlain.

"My work is influenced by Jazz. Miles, Coltrane, Dizzy, Evans, Brubeck and, as Count Basie used to refer to him, "Oscar Pete." I love listening to the old guys tell their stories and talk about their struggles. Listening to Jazz Profiles on NPR, it's like hanging out with them late at night. The music is alive, always changing. They push space. They push themselves to take risks. This is what I try to do with my paintings.



PAL News and Events

Pat Lucas, has art in the American Watercolor Society International Exhibition, Feb. 20 to April 9, 2016. Sacramento Fine Arts Center, 5330B Gibbons Dr., Carmichael, CA 95608

Patty Pieropan Dong has oils and watercolors on display at the Auburn Coffee Company, 1425 Lincoln Way, now through March. Stop by for a look at colorful interpretations of local scenes... and some very tasty coffee!

Craig Johnson has a wonderful article on his photography from Style Magazine. Check it out at <http://www.stylergbr.com/2016/01/27/100332/living-through-the-lens-with-craig-johnson>

Ann Ranlett is one of the new Artists selected by Suzuki vehicles to help with their advertising and promotional campaigns. Congratulations to Ann! See link for more details at <http://www.sacbee.com/news/business/biz-columns-blogs/cathie-anderson/article55929860.html#storylink=cpy>

The Living Art Treasures Exhibit honors Tommie Moller and Dick Kettle for their contributions and achievements in local art communities. Exhibiting Feb. 10 - Mar. 5, Wed.-Sat., 11-3, 580 Sixth Street, Lincoln, Ca. Their contributions include both teaching and creating outstanding art, which

have been displayed locally and nationally. For many years, Dick was the curator for the Feats of Clay art competition and show. Many individual artists in the Lincoln and Roseville areas can thank Dick for their introduction to the ceramic arts. Tommie is an artist, sculptor, teacher, and author. Perhaps her most visible work is the sculpture of the Maidu family at Roseville's Maidu center. **The Burns Family** brings new energy to the General Gomez Arts and Event Center as the owners took on an ambitious plan to revamp and revitalize space in downtown Auburn. Click this link to read more about it <http://www.auburnjournal.com/article/2/14/15/family-brings-new-energy-arts-building>.

Classes

The Art of Sculpting by Jim Lee, Artist in Residence at Placer Arts, Principal Artist at Clay Arts Studio GENERAL GOMEZ ARTS & EVENT CENTER, CLAY ARTS STUDIO (lower level). Learn more at www.clayheadsculptures.com

Sip-N-Paint, by Uni Stevens, classes scheduled on Wed., 5:00pm-8:00pm, **February 24th, & March 9th**, Popie Wines Tasting Room, located at the Blue Goose Fruitshed, 3550 Taylor Rd, Loomis, Ca. Comes complete with professional artist instruction, canvas, paint, wine, & hors d'oeuvres. Learn more at <http://www.unniart.com> and see the complete list of venues & classes offered.

"Relax with Tax: The Essentials of Income Tax for Individual Artists of All Disciplines", presented by California Lawyers for the Arts, Thursday, **February 18, 2016** ~ Time: 6:00 PM - 7:30 PM, Location: 2015 J Street, Suite 204 Sacramento, CA 95811, Register online at www.calawyersforthearts.org.

Business of Art - Workshop, Learn the business side of art and take your career to the next level. Join Blue Line Arts CEO, Julie Hirota, and Exhibitions Consultant, Tony Natsoulas, for an interactive and informative workshop. Sat. **March 12**, 10am - 12pm, 405 Vernon St, Roseville, Ca. Learn more at <http://www.bluelinearts.org/category/adult-programs>

Call to Artists

Art League of Lincoln Digital Art Show, March 16 - April 9. Digital Art; 2D, 3D or Video (Movies, Animations, etc.). Deadline to enter is **February 22**. Link here for more information <http://all4art.net/digital.html>.

Rocklin Fine Arts 2016 Juried Art Show February 27-28.. Juried show with monetary awards and ribbons. Submission deadline for entries is **February 22, 2016**. Apply online <http://rocklinfinearts.org/651733/2016-rfa-juried-art-show/>.

Clay Fest IV, "Open Division" show will be held at the beautiful Blue Line Arts Gallery in historic Roseville, California. Our "Student Division" show will be hosted by the Art League of Lincoln at their Art Center Gallery in downtown Lincoln, California. In addition to these two venues, we will be honoring the many Ceramic Art Educators in Northern California with a special, Educators Invitational Exhibit at the beautiful Ridley Gallery at Sierra College in Rocklin, California. **February 27, 2016** - Deadline for all on-line entries using "EntryThingy". The "Open Division" show will run April 14th - May 21st, the "Student Division" show will run April 20th - May 28th and the "Educators Invitational" show will run March 23rd - April 21st. Link here for more information <http://www.bluelinearts.org/call-to-artists>

High Hand Art Gallery, located in Loomis, Set-up- Friday, April 1; Event- Saturday April 2, 10a-5p, Sunday April 3, 10a-3p. This is a juried event for local artists to demonstrate, and sell their work. There is no entry fee for applicants; selected artists pay \$50 for the weekend. The deadline for applications is **February 28, 2016**; notification of accepted artists will be made by March 5, 2016. The application forms with instructions for submitting images and information about the event is available on the gallery's website, <http://www.highhandgallery.com/>.

Sacramento Fine Arts "On the Wall", a exhibition of wall sculpture, Sacramento Fine Arts Center, Gallery 3 Studio, March 7-31, 2016. Hand deliver art **March 5** from 10 am-4 pm. Link here for more information <http://sacfinearts.org/pdf/On-the-Wall-Sculptures.pdf>

The Lottery for the Arts returns to Blue Line Arts this spring! Our most cherished fundraiser, this event benefits children's education programs at Blue Line Arts, but we can't make it happen without you! Artists are asked to DONATE a piece of art valued at \$250+ for a chance to win cash awards and other prizes. Artworks will be juried by Sacramento gallery owner, Elliott Fouts. Deadline for entries is **March 8, 2016** and showing at the Blue Line Arts Apr 7 2016. Link here for more information <http://www.bluelinearts.org/call-to-artists>.

Purposeful Pottery, Artists are asked to create work that is equally visually appealing as it is for it's ability to be utilized. Whether its a vase, dish, or jar, pieces in this display will need to serve a purpose. Deadline for entries is **March 8, 2016** by 5:00pm, exhibiting WestPark Workshop Gallery: April 15th - May 28th 2016. Link here for more information <http://www.bluelinearts.org/call-to-artists>

Celtic Twilight was a variety of movements and trends in the 19th and 20th centuries that saw a renewed interest in aspects of Celtic culture. This art show reflects interpretations and expressions of Celtic nations where Celtic languages and cultural traits have survived: Brittany, Cornwall, Wales, Scotland, Ireland, and the Isle of Man. Accepted work must be hand-delivered to the General Gomez ARTS and Event Center, 808 Lincoln Way, Auburn, CA between 10:00 am and 6 pm on Monday, **March 14, 2016** or by appointment, no later than **March 14, 2016**. The show will run from Wednesday, March 17 through Saturday, April 9, 2016. An opening reception will be held on March 17, 5-7 pm. Link here for more information <http://www.generalgomez.com/call-to-artists/celtic-twilight/>

Aqua Vistas 2016, The second annual Aqua Vistas at the General Gomez Art Center, an art show which celebrates the life of water. The show intends to exhibit the spirit and essence of water and the activities surrounding water through art. The show will run from Friday, April 15 through Saturday, May 7, 2016. An opening reception will be held on Friday, April 15, 2016 from 5 - 7 pm. Artists are invited to submit their work for inclusion in this juried show. All media - both 2D and 3D - are acceptable for submission. The deadline for applications, including images, is Wednesday, **March 30, 2016**. Submissions will be juried for acceptance into the show. Link here for more information <http://www.generalgomez.com/call-to-artists/aqua-vistas-2016/>

Light Play, Today, light is being used in more experimental and inspiring ways. Light Play asks artists to create work that lets the light be the main point of interest. Painting, drawing, photography, installation, and sculpture will all be considered for this exhibit. Deadline for entries is **April 26, 2016**, by 5:00pm, exhibiting in WestPark Workshop Gallery: June 6th-July 9th, 2016. Link here for more information <http://www.bluelinearts.org/call-to-artists>

Auburn Art Walk, a reception to showcase the artists who display their work in participating businesses. It is presented by PlacerArts to promote cultural tourism. It occurs Quarterly, **First Friday of April, June, Aug, Oct**, from 6-9 p.m. in Downtown and Old Town Auburn. It is a wonderful opportunity for residents and visitors to become acquainted with local businesses and the art community. Refreshments are served at many of the venues. The artists' work remains on display for two months. Added entertainment, hands-on kids art activities plus selected wineries. Link here for more information <http://www.placerarts.org/programs/artwalk/#sthash.4kEsVSdf.dpuf>.

PAL Activity Calendar

We are excited about our 2016 program - we have many excellent artist demonstrations, studio tours, and critique sessions. Be sure and mark your calendar for these dates! Please consider attending the steering committee meetings as well- we need your input and would welcome you on the leadership team.

Steering committee meetings are held the 3rd Monday of the month, at 1pm, at the Newcastle Packing Shed Artists Studio, at 455 Main Street in Newcastle.

PAL 2016 Meeting & Program Schedule		Steering Committee Meetings
Mar 1, 10am	Kit Night - Formal Critique Auburn City Hall, 1225 Lincoln Way, Auburn, CA	Mar 21
April 5, 7pm	Jim Lee - Sculpting Demo ImagePathways, 461 Main St. Newcastle CA	Apr 18
May 3, 10am	Doug Van Howd Studio Tour 13333 New Airport Rd, Auburn, CA	May 16
Jun 7, 7pm	Show & Tell, ImagePathways 461 Main St. Newcastle, CA	Jun 20
Aug 2, 10am	Crocker Museum Tour 216 O St, Sacramento, CA	Aug 15
Sep 6, 7pm	Margot Schultzke, Composition ImagePathways, 461 Main St. Newcastle, CA	Sep 19
Oct 4, 10am	Jay Stargaard, Welding demo 21496 Meadow Oaks Lane, Colfax, CA	Oct 17
Nov 1, 10am	Nicholson's Blown Glass demo 5555 Bell Rd, Auburn, CA	Nov 21
Nov 8, 10am	PAL Membership Show, Umpqua Bank, 571 5th St. Lincoln CA. Bring work between 10am-11am. Show runs through Jan 10, 2017.	
Dec 6, 11am	Holiday Luncheon, location TBD	

Umpqua Gallery Schedule

PAL manages the gallery at the Umpqua Bank, 571 5th Street in Lincoln all throughout the year. We have two PAL membership shows at the gallery each year and facilitate displays by various art groups the rest of the year. We have Amy Newson to thank for ably acting as venue manager for this gallery. Here's what's coming up through the end of the year:

2016 Schedule

Start Date	End Date	Group Showing
2/9/16	3/8/16	Easter Seals of Superior CA Clients
3/8/16	4/12/16	Twelve Bridges Elementary School
4/12/16	5/10/16	Newcastle Artists Studio
5/10/16	6/14/16	Placer ARC/Studio 700 Instructors
6/14/16	7/12/16	Art League of Lincoln
7/12/16	8/9/16	PAL Membership Show
8/9/16	9/13/16	Lincoln Hills Painters Group
9/13/16	10/11/16	Lincoln Hills Photography Group
10/11/16	11/8/16	Newcastle Elementary Students
11/8/15	1/12/16	PAL Membership Show

PAL 2016 Steering Committee

We welcome PAL members to attend our steering committee meetings for their input, and to be part of PAL at a deeper level. We will hold

our 2016 steering committee meetings on the 3rd Monday of each month at 1pm, at the Newcastle Packing Shed Artists Collaborative, located at 455 Main St. in Newcastle, CA.

2016 Steering Committee Members

Gia McNutt	Steering Committee Chair	(916)502-5311	gja@team-sos.com
Carol Grismore	Membership Chair	(415)806-3218	cgrismore@hotmail.com
Diane Friedberg & Gia McNutt	PAL Open Juried Show Chair	(530) 268-1383	clubfred1@yahoo.com
Carol Duarte	Newsletter Editor	(916) 772-5230	smilyone7@gmail.com
Amy Newson	Umpqua Bank Venue Manager	(916)663-9697	amysartfuldesigns@yahoo.com
Rick Watson	Umpqua Bank Venue Manager (PAL Exhibits only)	(408) 892-7588	ashlandcreekart@yahoo.com
Pat Aragon, Pat Lucas, Sandy Main & Kathy Randall	Steering Committee Members		